



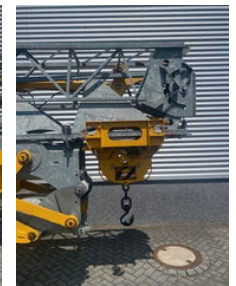
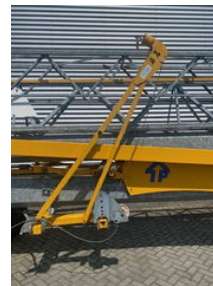
H. LUTGENS B.V.

Bouwkranen

Potain igo 21 snelmontage bouwkraan 26 m

General features

Brand	Potain
Subcategory	Mobile tower
Construction year	2005
Date of first registration	20-07-2005
Color	Yellow
Condition	Used
General condition	Very good
CE marking	Yes



Characteristics

Empty weight	12.120kg
Lifting capacity	1.800kg
Lifting height	19mm

Potain igo 21 snelmontage bouwkraan 26 m

Accessories